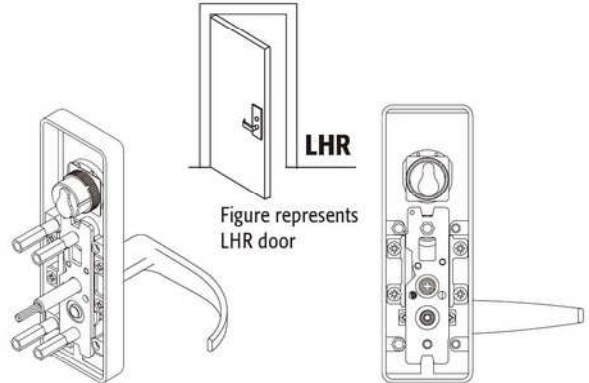


front



4200 SERIES VERTICAL TYPE PANIC EXIT DEVICE

Installation instructions for changing lever handing



CAUTION: The preset lever handle is "LHR". Please follow the steps below if "RHR" is needed.

1 REQUIRED:
Handle must be attached before loosening mounting studs.

Step 1:
Loosen mounting stud by 180° CCW.

Step 2:
Remove mounting stud.

Step 3: ↑

Step 4:
Pull spindle slightly up and rotate it to the required position as shown in the figure.

Step 5:
Push backplate back after step 4.

4

Step 6:
Re-install and tighten mounting studs by hex wrench.

5

A

Step 7:
Remove set screw by hex wrench.

B

Step 8:
Place lever in reverse direction.

Step 9:
Put the reversed handle back.

Step 10:
Tighten set screw by hex wrench.

6

A

Step 11:
Remove mounting studs to indicated position.

B

Re-install and tighten mounting studs.

7 The setting for switching handle direction is completed.

RHR

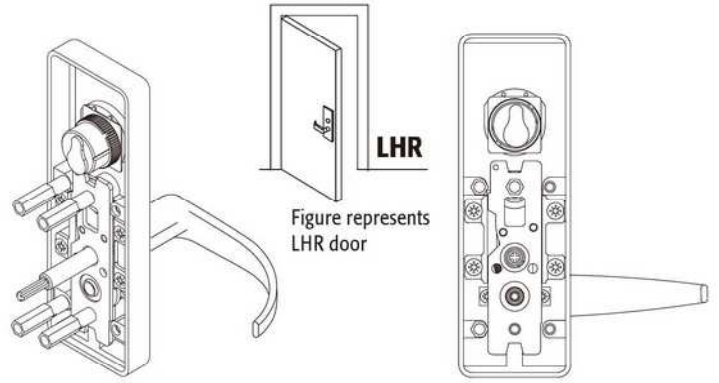
back



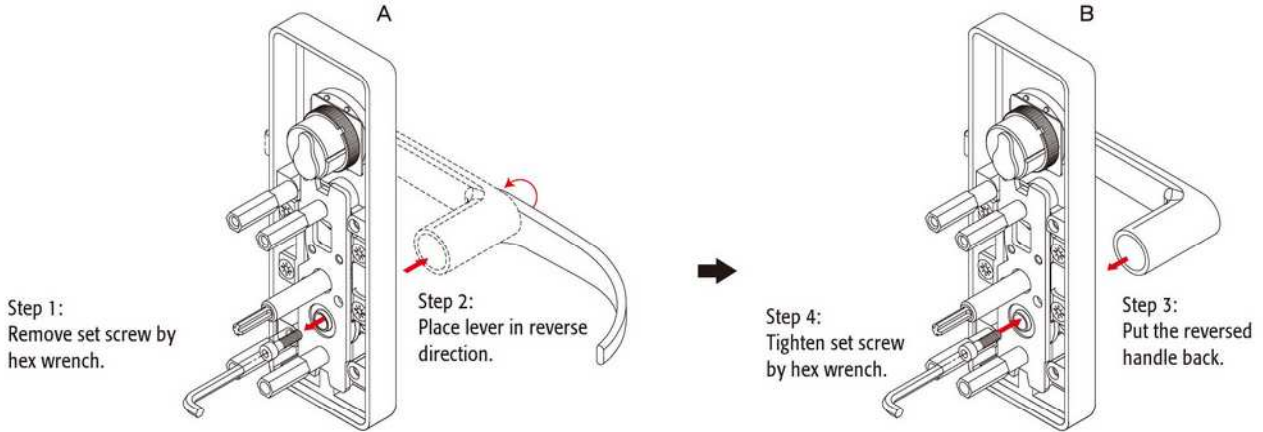
4200 SERIES RIM TYPE PANIC EXIT DEVICE

Installation instructions for changing lever handing

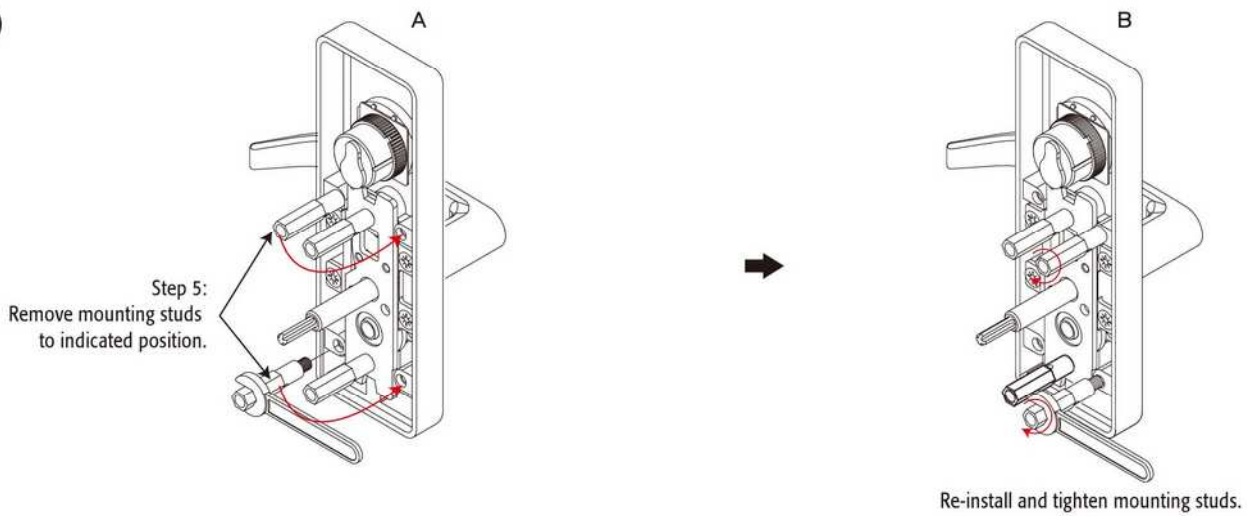
CAUTION: The preset lever handle is "LHR". Please follow the steps below if "RHR" is needed.



①



②



③

The setting for switching handle direction is completed.

