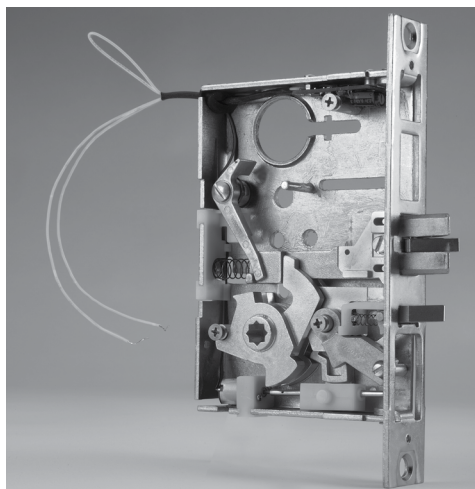


Typical Applications

- Child Care Facilities
- Computer Rooms
- Nursing Staff Lounges
- Rest Rooms
- Stairwell Towers
- Storage Areas




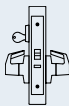


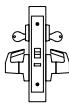

Specifications



PERFORMANCE:	<ul style="list-style-type: none"> • Motor drive factory tested to over 1.4 million cycles (1.4 times the ANSI/BHMA grade 1 std).
RECOMMENDED POWER SUPPLY:	<ul style="list-style-type: none"> • PDQ Model # 81440. <ul style="list-style-type: none"> – Input: 120VAC, .9A, 50/60Hz 240VAC, .6A, 50/60Hz – Output: 24VDC, 2A, filtered and regulated. • Rated for simultaneous operation of 2ea mortise lock assemblies. • Power Supply Requirements: <ul style="list-style-type: none"> – AC/DC Output Voltage – 1A min (filtered and regulated). • 12-24VDC @ < 1A initial surge (1 sec), 5mA standby after 30 sec. – AC Output Voltage. • 12-24VAC (60Hz) @ < 1A initial surge (1 sec), 15mA standby after 30 sec
ELECTRICAL SPECIFICATIONS:	<ul style="list-style-type: none"> • Input voltage: 12-24VDC or 12-24VAC. • Max In-rush current: 1.0A. • Standby current: <ul style="list-style-type: none"> – 12VAC: 12mA. – 24VAC: 10mA. – 12VDC: 3mA. – 24VDC: 5mA. <p>Note: Operating voltage at $\pm 10\%$ of rated voltage.</p>
CERTIFICATIONS, LISTINGS, COMPLIANCES:	<ul style="list-style-type: none"> • ANSI/UL10C and CAN/ULC-5104 Listed for "Fire Exit Hardware" up to 3 hours for 4'0" x 8'0" maximum single, 8'0" x 8'0" maximum pairs. • Assembled in the U.S.A. with U.S. and foreign material. Meets requirements of the Buy American Act as a COTS product manufactured in the United States.
WARRANTY:	<ul style="list-style-type: none"> • 2-Years

MR199A / MR200

PDQ Functions – Keyed

FUNCTION	FUNCTION NUMBER	OUTSIDE INSIDE	DESCRIPTION	ANSI NUMBER
Electrified Storeroom	 MR199A		<ul style="list-style-type: none"> • Key outside retracts latchbolt • Latchbolt operated by lever from inside • Auxiliary latch deadlocks latchbolt • Fail safe – latchbolt operated by lever from outside unless electrically locked • Fail secure – latchbolt operated by lever from outside when electrically unlocked • Motor drive locking/unlocking • Not field reversible • Specify handing  • Available with option: REX - Request to Exit	—
Electrified Institutional	 MR200		<ul style="list-style-type: none"> • Key outside retracts latchbolt • Key inside retracts latchbolt • Auxiliary latch deadlocks latchbolt • Fail safe – latchbolt operated by either lever when electrically locked • Fail secure – latchbolt operated by either lever when electrically unlocked • Motor drive locking/unlocking • Not field reversible • Specify handing  • Available with option: REX - Request to Exit	—



INDICATES RIGID LEVER



MR199A / MR200

Escutcheon

F Series Trim



F Trim

2-1/16" W x 7-5/8" H
626 (US26D) Finish Only
(Brass Escutcheon)

J Series Trim



J Trim



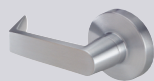
J Wide Trim

1-3/4" W x 7-5/8" H

2-9/16" W x 8" H

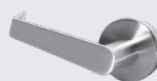
7 Finishes (605, 606, 612, 613, 622, 629, 630)
Specify 630 in Lieu of 619
(Stainless Steel Escutcheon)

Sectional



SF Trim

Round Rose
(Brass)



SJ Trim

Round Rose
(Stainless Steel)



SR Trim

Square Rose
(Stainless Steel)

Levers



Philadelphia



Boston



Miami

All Levers  Brass



Philadelphia



Boston



Miami



Chicago



Dallas



Los Angeles



Memphis



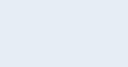
Orlando



Houston



Ball Knob
(Non-ADA)



All Levers  Stainless Steel

Finishes



605 (US3)
Bright Brass



606 (US4)
Satin Brass



612 (US10)
Satin Bronze



613E
Dark Oxidized
Satin Bronze
(Equivalent)



622 (US19)
Flat Black



626* (US26D)
Satin Chromium



629 (US32)
Bright Stainless
Steel



630 (US32D)
Satin Stainless
Steel