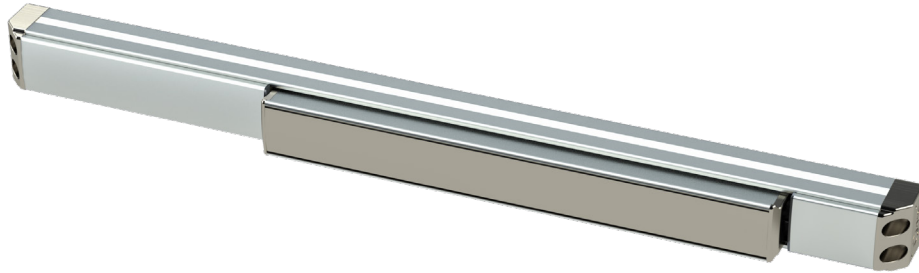


# 6300D Series

## Dummy Exit Device

### Architectural Submittal Sheet



#### Specifications



<b>Rail:</b>	• Extruded aluminum
<b>Hand:</b>	• Device is non-handed
<b>Dogging:</b>	• Dogging standard    • Active push bar, dog to make inactive
<b>Minimum Stile Width:</b>	• 3"
<b>Door Thickness:</b>	• 1-3/4" - 2" (Consult factory for other)
<b>Door Width:</b>	• 24", 36", 48" standard
<b>Finishes:</b>	• 605 - Polished Brass, 606 - Satin Brass, 613E - Dark Oxidized Satin Bronze (Equivalent), 622 - Flat Black, 626 - Satin Chrome, 630 - Satin Stainless Steel, 630F - Full Stainless Steel • Optional Anti Microbial Coating available on 626 & 630
<b>Fasteners:</b>	• Includes machine and wood screws    • SNB Optional
<b>Warranty:</b>	• Ten (10) year limited warranty
<b>Electrified Options:</b>	• Request to Exit/Signal Switch    • ISMC Connectors
<b>Certifications, Compliances, Listings:</b>	• Complies with ADA (Americans with Disabilities Act) and ICC/ANSI 117.1 for Accessible and Usable Buildings • Meets requirements of the BAA as a COTS product manufactured in the United States

# 6300D Series

## 6300D Dummy Exit Devices

PART	DESCRIPTION
6300D	Dummy, 3'0" door
6310D	Dummy, 4'0" door
6320D	Dummy, 2'0" door

## 6300D Dummy Mechanical Options

PART	DESCRIPTION
EC	End Cap Cover
SNB	Sex Nuts & Bolts
SHS	Tamper Proof Security Head Screws

## 6300D Dummy Electrical Options

PART	DESCRIPTION
SS	Signal Switch - Request to Exit and Monitoring

# 6300D Series

## Finishes

### 605

#### Bright Brass

Gold anodized aluminum rail (matte), push bar sides and dogging filler Polished brass plated cast head cover and end caps. Polished brass plated heavy gauge stamped push bar face.



### 606

#### Satin Brass

Gold anodized aluminum rail (matte), push bar sides and dogging filler Brushed brass plated cast head cover and end caps. Brushed brass plated heavy gauge stamped push bar face.



### 613E

#### Dark Oxidized Satin Bronze (Equivalent)

Dark bronze anodized aluminum rail, push bar sides and dogging filler Powder coated cast head cover and end caps. Powder coated heavy gauge stamped push bar face.



### 622

#### Flat Black

Black anodized aluminum rail, push bar sides and dogging filler Powder coated cast head cover and end caps. Powder coated heavy gauge stamped push bar face



### 625

#### Bright Chrome

Clear anodized aluminum rail (matte), push bar sides and dogging filler Polished chrome plated cast head cover and end caps. Polished chrome plated heavy gauge stamped push bar face.



### 626

#### Satin Chrome

Clear anodized aluminum rail (matte), push bar sides and dogging filler Brushed chrome plated cast head cover and end caps. Brushed chrome plated heavy gauge stamped push bar face.



### 630

#### Satin Stainless

Clear anodized aluminum rail (matte), push bar sides and dogging filler Plated (stainless look) cast head cover and end caps. Brushed stainless heavy gauge stamped push bar face.



### 630F

#### Full Satin Stainless

Brushed stainless fully clad rail, push bar and dogging filler Plated (stainless look) cast head cover and end caps.

