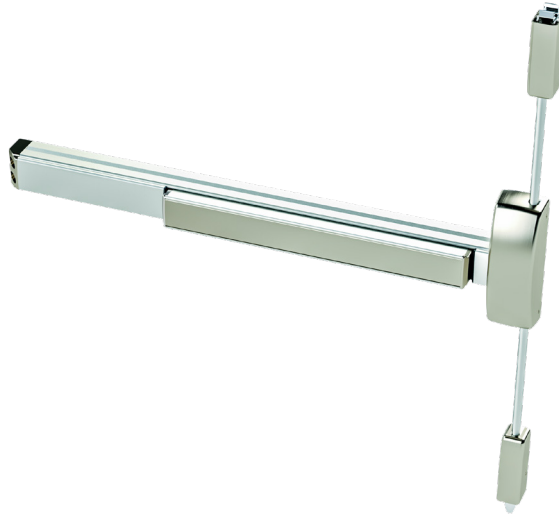


6300V Series

Commercial Wide Stile Surface Vertical Rod Exit Device

Architectural Submittal Sheet



Specifications

Rail:	• Extruded aluminum
Latch:	• Top - Stainless Steel 3/4" toggle • Bottom - 5/8" Travel Drop Bolt • Less bottom rod option
Hand:	• Device is non-handed • Trim is non-handed or field reversible
Dogging:	• Hex key dogging standard • Cylinder dogging optional • Dogging not available for fire labeled devices & 24" devices
Minimum Stile Width:	• 6300 - 3-1/2" • 6400 - 3 1/8" with 639027/639057 strike and 2 1/8" on aluminum frames with blade stop strike
Door Thickness:	• 1-3/4" - 2" (Consult factory for other)
Door Width:	• 24", 36", 48" standard
Door Height:	• Panic - Up to 10' • Fire - See fire ratings charts in price book
Strike:	• Cast top strike, plate bottom strike
Finishes:	• 605 - Polished Brass, 606 - Satin Brass, 613E - Dark Oxidized Satin Bronze (Equivalent), 622 - Flat Black, 626 - Satin Chrome, 630 - Satin Stainless Steel, 630F - Full Stainless Steel • Optional Anti-Microbial Coating available on 626 & 630
Fasteners:	• Includes machine screws and wood screws • SNB Optional
Warranty:	• Ten (10) year limited warranty
Electrified Options:	• Motorized Latch Retraction • Request to Exit/Signal Switch • Alarmed Exit • Latch Bolt Monitor • ISMC Connectors • Delayed Egress (Can only be used on a door with a 3 1/2" or larger stile)
Certifications, Compliances, Listings:	• ETL listed for UL 305 "Panic", listed for UL 10C "Fire Exit Hardware" up to 3 hours. • ANSI/BHMA A156.3 Grade 1 • Complies with ADA (Americans with Disabilities Act) and ICC/ANSI 117.1 for Accessible and Usable Buildings • FL # +50/-50 psf 8080 18ga Pair • Meets requirements of the BAA as a COTS product manufactured in the United States • Meets CBC Chapter 11B-309.4 when ordered with 5P option (Available with Top & Bottom Rod and Less Bottom Rod (LBR))

6300V Series

6300V Wide Stile Surface Vertical Rod Exit Devices

PART	DESCRIPTION
6300V	Surface vertical rod, Listed to UL305 for Panic, hex key dogging, 3'0" door
6300VLBR	Surface vertical rod, less bottom rod, Listed to UL305 for Panic, hex key dogging, 3'0" door
6300VF	Surface vertical rod, Listed to UL10C for Fire, no dogging, 3'0" door
6300VFLBR*	Surface vertical rod, less bottom rod, Listed to UL10C for Fire, no dogging, 3'0" door
6310V	Surface vertical rod, Listed to UL305 for Panic, hex key dogging, 4'0" door
6310VLBR	Surface vertical rod, less bottom rod, Listed to UL305 for Panic, hex key dogging, 4'0" door
6310VF	Surface vertical rod, Listed to UL10C for Fire, no dogging, 4'0" door
6310VFLBR*	Surface vertical rod, less bottom rod, Listed to UL10C for Fire, no dogging, 4'0" door
6320V	Surface vertical rod, Listed to UL305 for Panic, no dogging, 2'0" door
6320VLBR	Surface vertical rod, less bottom rod, Listed to UL305 for Panic, no dogging, 2'0" door
6320VF	Surface vertical rod, Listed to UL10C for Fire, no dogging, 2'0" door
6320VFLBR*	Surface vertical rod, less bottom rod, Listed to UL10C for Fire, no dogging, 2'0" door

*LBR FIRE RATED DEVICES MUST BE ORDERED IN PAIRS. One fire pin furnished per pair.

6300V Series

6300V Surface Vertical Rod Mechanical Options

PART	DESCRIPTION
EC	End Cap Cover
TLA	Head Cover (Similar to 6200 Series)
AM	Anti Microbial (630/626 only)
WS	Florida Windstorm
CD	Cylinder Dogging
LD	Less Dogging
SNB	Sex Nuts & Bolts
SHS	Tamper Proof Security Head Screws
LBR	Less Bottom Rod
LBR-FP	Less Bottom Rod with Fire Pin (used with fire rated pair)
8', 9', 10'	Doors and Devices Over 7' Tall
5P	Accessibility Device (5 lb maximum push force) (Available with Top & Bottom Rod and Less Bottom Rod (LBR))

6300V Surface Vertical Rod Electrical Options

PART	DESCRIPTION
AL	Alarmed Exit
LM	Latch Bolt Monitoring
MLR	Motorized Latch Retraction
SS	Signal Switch - Request to Exit and Monitoring
ALHW	Alarmed Exit with Hard Wire Power and Relay
ISMC	Industry Standard Molex Connector (order in addition to other electrified options)
DE	Delayed Egress (Can only be used on a door with a 3 1/2" or larger stile)

1: Electrified options not available on 24" device.

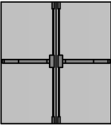
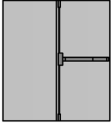
2: For the MLR Motorized Latch Retraction option: 3 ft devices, maximum cut is 3". 4 ft devices, maximum cut is 9".

3: For the Alarm option: 3 ft devices, maximum cut is 2". 4 ft devices, maximum cut is 8".

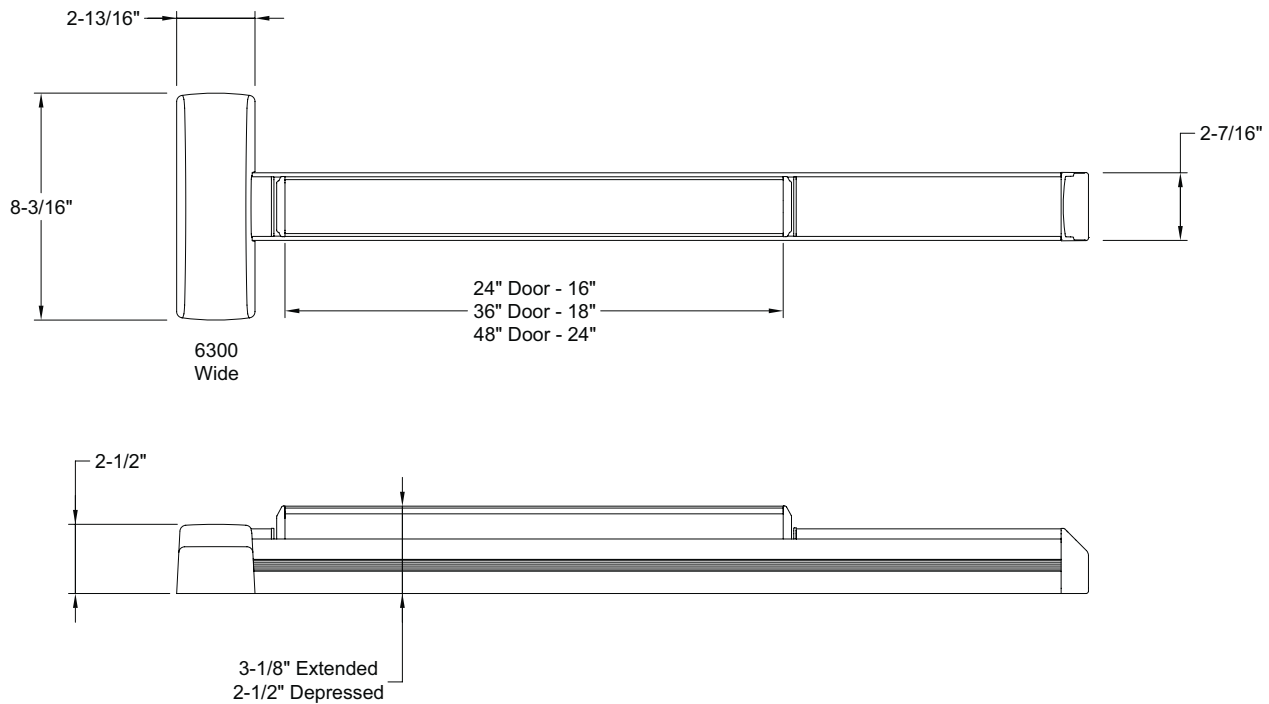
4: For Delayed Egress option: 3 ft. devices- no cut and for 4 ft devices, maximum cut is 6".

6300V Series

6300VF Surface Vertical Devices

		RATING	MAX OPENING	APPLICATION
	Double Door Top/Btm Latches or Less Bottom Rod (LBR)	3 Hour Rated	8' x 10' Top/Btm Latches 8' x 8' Less Bottom Rod	Single Egress Pairs (Swing Same Direction)
	Double Door Top/Btm Latches or Less Bottom Rod (LBR)	3 Hour Rated	8' x 10' Top/Btm Latches 8' x 8' Less Bottom Rod	Double Egress Pairs (Swing Opposite Directions)

6300 Series Wide Stile



6300V Series

Finishes

605

Bright Brass

Gold anodized aluminum rail (matte), push bar sides and dogging filler
filler Polished brass plated cast head cover and end caps. Polished
brass plated heavy gauge stamped push bar face.

606

Satin Brass

Gold anodized aluminum rail (matte), push bar sides and dogging filler
Brushed brass plated cast head cover and end caps. Brushed brass
plated heavy gauge stamped push bar face.

613E

Dark Oxidized Satin Bronze (Equivalent)

Dark bronze anodized aluminum rail, push bar sides and dogging filler
Powder coated cast head cover and end caps. Powder coated heavy
gauge stamped push bar face.

622

Flat Black

Black anodized aluminum rail, push bar sides and dogging filler
Powder coated cast head cover and end caps. Powder coated heavy
gauge stamped push bar face

625

Bright Chrome

Clear anodized aluminum rail (matte), push bar sides and dogging
filler Polished chrome plated cast head cover and end caps. Polished
chrome plated heavy gauge stamped push bar face.

626

Satin Chrome

Clear anodized aluminum rail (matte), push bar sides and dogging
filler Brushed chrome plated cast head cover and end caps. Brushed
chrome plated heavy gauge stamped push bar face.

630

Satin Stainless

Clear anodized aluminum rail (matte), push bar sides and dogging
filler Plated (stainless look) cast head cover and end caps. Brushed
stainless heavy gauge stamped push bar face.

630F

Full Satin Stainless

Brushed stainless fully clad rail, push bar and dogging filler Plated
(stainless look) cast head cover and end caps.

