

Deadbolts

KM, KT, KV Series

DEADBOLTS

KM, KT, KV SERIES BORED

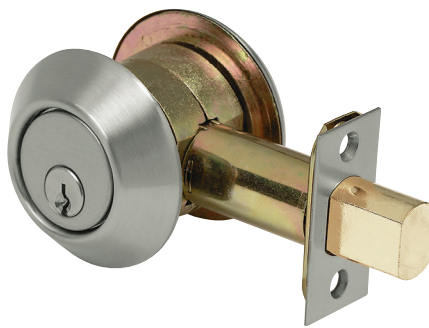
Table of Contents

| | |
|--|------------|
| KT Series Bored Deadbolts | 3-4 |
| KM Series Bored Deadbolt | 5-6 |
| KV Series Bored Deadbolt | 7-8 |
| KV Series Bored Deadbolt With Privacy Indicators | 9 |

KT Series (Extra Heavy Duty Commercial Grade)

Typical Applications

- Commercial
- Government
- Hospitality
- Institutional
- Military
- Multi-family
- Offices
- Retail



Specifications

| | |
|-------------------|--|
| FOR DOORS: | • 1-3/4" thick standard, contact factory for other thicknesses |
| DOOR PREP: | • 2-1/8" DIA |
| BACKSET: | • 2-3/4" (Default) • 2-3/8" available |
| FRONT: | • 2-1/4" x 1-1/8" or 2-1/4" x 1" • Stainless Steel or Wrought Brass |
| STRIKE: | • 2-3/4" x 1-1/8" • Stainless Steel or Wrought Brass • Dust Box Included |
| DEADBOLT: | • 1" Throw • Brass Bolt containing two concealed 1/4" case-hardened Steel Roll Pins |
| HAND: | • Non-handed |
| TRIM: | • Wrought Brass Scalp • Reinforced Zinc Diecast Rose |
| KEYS: | • Two (2) per Lock |
| KEYWAYS: | • SCC standard (Schlage C Compatible) • Also available in keyways of other manufacturers |
| CYLINDER: | • 6-pin Brass Mortise Cylinder keyed to 5-pins |
| KEYING: | • Options: MK, CMK or GMK • Zero Bitted (KO), Keyed Different (KD) or Keyed Alike (KA) • Can be keyed into existing master key systems |
| FINISHES: | • 605 (US3), 606 (US4), 612 (US10), 613E, 625 (US26), 626 (US26D) |
| WARRANTY: | • One (1) year Limited Warranty |
| LISTINGS: | • UL 10C listed, 3-hour fire rated as auxiliary locks for A label single doors • UL 10B listed for neutral pressure doors |

PDQ Functions

| FUNCTION | FUNCTION NUMBER | INSIDE OUTSIDE | DESCRIPTION | ANSI NUMBER |
|-----------------|-----------------|------------------|---|-------------|
| Entrance | 116 | | • Lock or unlock by key from outside, by thumb turn from inside | E1151 |
| Single Cylinder | 121 | | • Lock or unlock by key from outside • Blank mortise cylinder on inside | E1161 |
| Single Sided | 125 | | • Deadbolt by inside thumb turn only • Blank mortise cylinder on outside | E11111 |
| Double Cylinder | 137 | | • Lock or unlock by key from both sides | E1141 |
| Classroom | 148 | | • Lock or unlock by key from outside • Turnpiece inside retracts deadbolt, but will not project it | E1171 |

How to Order

| QUANTITY | SERIES | FUNCTION | FINISH | BACKSET | CYLINDER | KEYWAY | KEYING |
|--|--------|----------|---|---|----------------------------------|--------|--------|
| 10 | KT | 116 | 626 | 234 | D | SCC | KD |
| NOTE: Case quantity is 10 / Case weight is 19 lbs. Single Cylinder / Case weight is 22 lbs. Double Cylinder / For split finishes, designate O/S trim first, then I/S | | | 605 606 612 613E 625 626 | 234 – 2-1/4" x 1-1/8" (Standard) 234R – 2-1/4" x 1-1/8" x 1/4" Radius 234D – Drive-in 238 – 2-1/4" x 1" 238R – 2-1/4" x 1" x 1/4" Radius 238D – Drive-in | D – Default L – Less Cylinder | | |

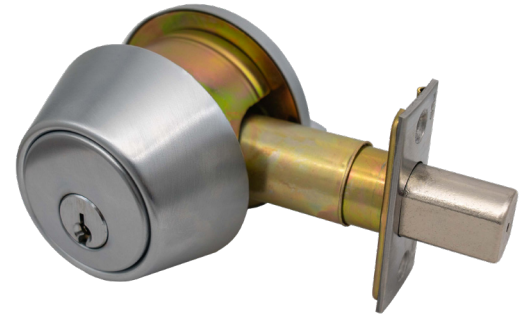
Keyways

| CONVENTIONAL CYLINDER | |
|-----------------------|-----------------------|
| KEYWAY | PDQ KEYWAY DESIGNATOR |
| Schlage C (Default) | SCC |
| PDQ Restricted | TA |
| Arrow AR1 | ARA |
| Corbin 59A1 | CO59A1 |
| Corbin 60 | CO6 |
| Corbin L4 | CL4 |
| Russwin D1 | RUD |
| Russwin 981 | RUD981 |
| Schlage E | SCE |
| Schlage C | SCC |
| Schlage C-K | SCC-K |
| Sargent LA | SAL |
| Sargent RA-RC | RA-RC |
| Accentra (Yale) E1R | YA8 |
| Accentra (Yale) GA | GA |
| Falcon E-R | FAL |
| Kwikset | KW |

Keying

| DESCRIPTION | PDQ KEYING DESIGNATOR |
|---------------------------|-----------------------|
| Keyed Different (Default) | KD |
| Keyed Alike | KA |
| "0" Zero Bitted | KO |
| Master Keyed | MK |
| Construction Master Keyed | CMK |
| Grand Master Keyed | GMK |

KM Series (Heavy Duty Commercial Grade)



Typical Applications

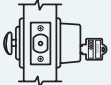
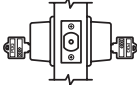
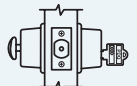
- Commercial
- Government
- Hospitality
- Institutional
- Military
- Multi-family
- Offices
- Retail



Specifications

| | |
|---|--|
| FOR DOORS: | • 1-3/8" to 1-3/4" thick for Conventional Cylinder, 1-1/2" to 2" for SFIC |
| DOOR PREP: | • 2-1/8" DIA |
| BACKSET: | • 2-3/4" - 2-3/8" adjustable (Default) • 2-3/4" (Option) |
| FRONT: | • 2-1/4" x 1-1/8" (Default) • 2-1/4" x 1" faceplate available • Stainless Steel or Wrought Brass |
| STRIKE: | • 2-3/4" x 1-1/8" • Stainless Steel or Wrought Brass • Dust Box Included |
| DEADBOLT: | • 1" Throw • Brass Bolt containing one 1/4" case-hardened Steel Roll Pin |
| THUMBTURN: | • ADA Compliant |
| HAND: | • Non-handed |
| TRIM: | • Stainless Steel or Wrought Brass Scalp • Reinforced Zinc Diecast Rose |
| KEYS: | • Two (2) per Lock |
| KEYWAYS: | • SCC standard (Schlage C Compatible) • Also available in keyways of other manufacturers |
| INTERCHANGEABLE CORE: | • 6 or 7-pin • Compatible with Best, Falcon and Arrow |
| CYLINDER: | • 6-pin Brass Insert Cylinder keyed to 5-pins • Standard High Security and UL437 Cylinders Available • Large Format IC Core |
| KEYING: | • Options: MK, CMK or GMK • Zero Bitted (KO), Keyed Different (KD) or Keyed Alike (KA) • Can be keyed into existing master key systems |
| FINISHES: | • 605 (US3), 606 (US4), 613E, 622 (US19), 626 (US26D), 630 (US32D) |
| CERTIFICATIONS, LISTINGS, COMPLIANCES: | • UL 10C listed, 3-hour fire rated as auxiliary locks for A label single doors • UL 10B listed for neutral pressure doors • Complies with ADA (Americans with Disabilities Act) and ICC/ANSI 117.1 for Accessible and Usable Buildings • TAA compliant. Country of origin: KR |
| WARRANTY: | • One (1) year Limited Warranty |

PDQ Functions

| FUNCTION | FUNCTION NUMBER | INSIDE OUTSIDE | DESCRIPTION | ANSI NUMBER |
|-----------------|-----------------|---|---|-------------|
| Single Cylinder | 116 |  | • Lock or unlock by key from outside, by thumb turn from inside | E1151 |
| Double Cylinder | 137 |  | • Lock or unlock by key from both sides | E1141 |
| Classroom | 148 |  | • Lock or unlock by key from outside • Turnpiece inside retracts deadbolt, but will not project it | E1171 |

How to Order

| QUANTITY | SERIES | FUNCTION | FINISH | BACKSET | CYLINDER | KEYWAY | KEYING |
|--|--------|----------|---|--|--|--------|--------|
| 20 | KM | 116 | 630 | ADJ | D | SCC | KD |
| NOTE: Case quantity is 20 / Case weight varies | | | 605 606 613E 622 626 630 | 234 – 2-3/4" 238 – 2-3/8" ADJ – Adjustable 2-3/4"–2-3/8"(Default) | D Default L Less Cylinder SF6 Lock is SFIC prepped w/ 6 pin core SF7 Lock is SFIC prepped w/ 7 pin core SFL Lock is SFIC prepped but less core SFC Lock is SFIC prepped w/ construction core SFP Lock is SFIC prepped w/ plastic construction core LFL Lock is Schlage LFIC prepped but less core | | |

Keyways

| CONVENTIONAL CYLINDER | | SMALL FORMAT INTERCHANGEABLE CORE | | LARGE FORMAT INTERCHANGEABLE CORE | | | |
|-----------------------|-----------------------|--|---|-----------------------------------|-----------------------|--|--|
| KEYWAY | PDQ KEYWAY DESIGNATOR | KEYWAY (BEST COMPATIBLE) | PDQ KEYWAY DESIGNATOR | KEYWAY | PDQ KEYWAY DESIGNATOR | | |
| Schlage C (Default) | SCC | BEST A (Default), B, C, D, E, F, G, H, J, K, L, M, Q, R, WA, WB, WG, WH, TB, TD, TE, R | A (Default), B, C, D, E, F, G, H, J, K, L, M, Q, R, WA, WB, WG, WH, TB, TD, TE, R | Schlage C (Default) | SCC | | |
| PDQ Restricted | TA | | | PDQ Restricted | TA | | |
| Arrow AR1 | ARA | | | | | | |
| Corbin 59A1 | CO59A1 | | | | | | |
| Corbin 60 | CO6 | | | | | | |
| Corbin L4 | CL4 | | | | | | |
| Russwin D1 | RUD | | | PDQ Exclusive | PDQ1 | | |
| Russwin 981 | RUD981 | | | | PDQ2 | | |
| Schlage E | SCE | | | PDQ Exclusive and Restricted | PDQ3 | | |
| Schlage C | SCC | | | | | | |
| Schlage C-K | SCC-K | | | | | | |
| Sargent LA | SAL | | | | | | |
| Sargent RA-RC | RA-RC | | | | | | |
| Accentra (Yale) E1R | YA8 | | | | | | |
| Accentra (Yale) GA | GA | | | | | | |
| Falcon E-R | FAL | | | | | | |
| Kwikset | KW | | | | | | |

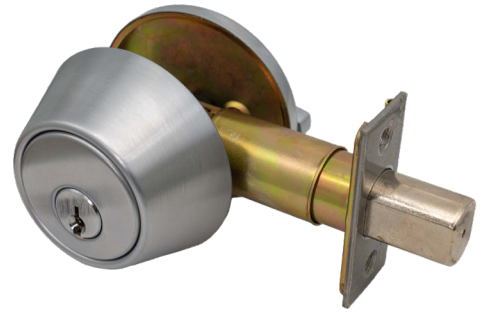
Keying

| DESCRIPTION | PDQ KEYING DESIGNATOR |
|---------------------------|-----------------------|
| Keyed Different (Default) | KD |
| Keyed Alike | KA |
| *O* Zero Bitted | KO |
| Master Keyed | MK |
| Construction Master Keyed | CMK |
| Grand Master Keyed | GMK |

KV Series (Standard Duty Commercial Grade)

Typical Applications

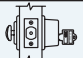
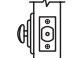
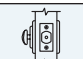

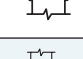
- Light Commercial Installations
- Low Security Applications
- Residential



Specifications

| | |
|---|--|
| FOR DOORS: | • 1-3/8" to 1-3/4" thick for Conventional Cylinder, 1-1/2" to 2" for SFIC |
| DOOR PREP: | • 2-1/8" DIA |
| BACKSET: | • 2-3/4" - 2-3/8" adjustable (Default) |
| FRONT: | • 2-1/4" x 1" with filler plate • Stainless Steel or Wrought Brass |
| STRIKE: | • 2-3/4" x 1" • Stainless Steel or Wrought Brass • Dust Box Included |
| DEADBOLT: | • 1" Throw • Brass Bolt containing one 1/4" case-hardened Steel Roll Pin |
| HAND: | • Non-handed |
| TRIM: | • Stainless Steel or Wrought Brass Scalp |
| KEYS: | • Two (2) per Lock |
| KEYWAYS: | • SCC standard (Schlage C Compatible) • Also available in keyways of other manufacturers |
| INTERCHANGEABLE CORE: | • 6 or 7-pin • Compatible with Best, Falcon and Arrow |
| CYLINDER: | • 6-pin Brass Insert Cylinder keyed to 5-pins • Standard High Security and UL437 Cylinders Available |
| KEYING: | • Options: MK, CMK or GMK • Zero Bitted (KO), Keyed Different (KD) or Keyed Alike (KA) • Can be keyed into existing master key systems |
| FINISHES: | • 605 (US3), 606 (US4), 613E, 622 (US19), 629 (US32), 630 (US32D) |
| CERTIFICATIONS, LISTINGS, COMPLIANCES: | • ANSI "Positive Pressure Fire Tests of Door Assemblies" for up to and including 3 hrs. • Complies with ADA (Americans with Disabilities Act) and ICC/ANSI 117.1 for Accessible and Usable Building • UL 10C listed, 3-hour fire rated as auxiliary locks for A label single doors • UL 10B listed for neutral pressure doors • TAA compliant. Country of origin: KR |
| WARRANTY: | • One (1) year Limited Warranty |

PDQ Functions

| FUNCTION | FUNCTION NUMBER | INSIDE OUTSIDE | DESCRIPTION | ANSI NUMBER |
|---------------------------------|-----------------|---|--|-------------|
| Single Cylinder | 116 |  | • Lock or unlock by key from outside, by thumb turn from inside | E2152 |
| Single Sided | 125 |  | • Deadbolt by inside thumb turn only • Special door preparation required • Surface mounted, 1-3/4" bore hole, one side | E2192 |
| Single Sided | 125 BK |  | • Deadbolt by inside thumb turn only | E21112 |
| Single Sided Indicator Deadbolt | 125 IND |  | • No key outside • Indicator outside • Thumbturn inside extends/retracts deadbolt • Emergency key outside retracts deadbolt | — |
| Double Cylinder | 137 |  | • Lock or unlock by key from both sides | E2142 |

How to Order

| QUANTITY | SERIES | FUNCTION | FINISH | BACKSET | CYLINDER | KEYWAY | KEYING | OPTION |
|---|--------|----------|----------------------------------|---|--|--------|--------|---------------|
| 20 | KV | 116 | 630 | ADJ | D | SCC | KD | – |
| NOTE: Case quantity is 20 / Case weight is 26 lbs. Single Cylinder / Case weight is 35 lbs. Double Cylinder | | | 605 606 613E 622 630 | ADJ – 2-1/4" x 1" (Default) ADJR – 2-1/4" x 1" x 1/4" Radius | D Default L Less Cylinder SF6 Lock is SFIC prepped w/ 6 pin core SF7 Lock is SFIC prepped w/ 7 pin core SFL Lock is SFIC prepped but less core SFC Lock is SFIC prepped w/ construction core SFP Lock is SFIC prepped w/ plastic construction core | | | DB – Dust Box |

Keyways

| CONVENTIONAL CYLINDER | | SMALL FORMAT INTERCHANGEABLE CORE | | | |
|-----------------------|-----------------------|--|---|------------------------------|------|
| KEYWAY | PDQ KEYWAY DESIGNATOR | KEYWAY (BEST COMPATIBLE) | PDQ KEYWAY DESIGNATOR | | |
| Schlage C (Default) | SCC | BEST A (Default), B, C, D, E, F, G, H, J, K, L, M, Q, R, WA, WB, WG, WH, TB, TD, TE, R | A (Default), B, C, D, E, F, G, H, J, K, L, M, Q, R, WA, WB, WG, WH, TB, TD, TE, R | | |
| PDQ Restricted | TA | | | | |
| Arrow AR1 | ARA | | | | |
| Corbin 59A1 | CO59A1 | | | | |
| Corbin 60 | CO6 | | | | |
| Corbin L4 | CL4 | | | | |
| Russwin D1 | RUD | | | | |
| Russwin 981 | RUD981 | | | PDQ Exclusive | PDQ1 |
| Schlage E | SCE | | | PDQ Exclusive and Restricted | PDQ2 |
| Schlage C | SCC | | | | PDQ3 |
| Schlage C-K | SCC-K | | | | |
| Sargent LA | SAL | | | | |
| Sargent RA-RC | RA-RC | | | | |
| Accentra (Yale) E1R | YA8 | | | | |
| Accentra (Yale) GA | GA | | | | |
| Falcon E-R | FAL | | | | |
| Kwikset | KW | | | | |

Keying

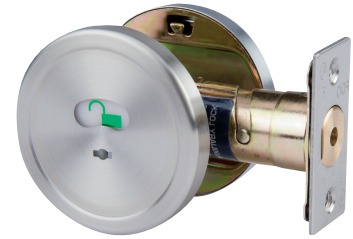
| DESCRIPTION | PDQ KEYING DESIGNATOR |
|---------------------------|-----------------------|
| Keyed Different (Default) | KD |
| Keyed Alike | KA |
| "0" Zero Bitted | KO |
| Master Keyed | MK |
| Construction Master Keyed | CMK |
| Grand Master Keyed | GMK |

KV Series with Privacy Indicator (Light Duty Commercial Grade)

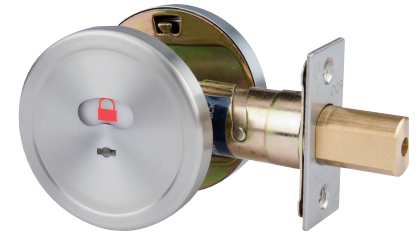


Specifications

| | |
|---------------------------|--|
| PRIVACY INDICATOR: | • Symbol showing Unoccupied- Occupied |
| THUMBTURN: | • ADA Compliant |
| FOR DOORS: | • 1-3/8" to 1-3/4" Thick |
| BACKSET: | • 2-3/4" (Factory Default) adjustable to 2-3/8" |
| DOOR PREP: | • 2-1/8" DIA |
| FACEPLATE: | • 1" x 2-1/4" |
| STRIKE: | • Non-handed |
| DEADBOLT: | • 1" Throw with hardened steel roller • Brass Bolt containing one concealed 1/4" case-hardened Steel Roll Pin |
| TRIM: | • Wrought Brass |
| KEYS: | • Emergency Key Included |
| FINISHES: | • 613E, 622 (US19), 626 (US26D) |
| WARRANTY: | • One (1) year Limited Warranty |
| LISTINGS: | • UL 10C listed, 3-hour fire rated as auxiliary locks for A label single doors • UL 10B listed for neutral pressure doors |



UNOCCUPIED



OCCUPIED

Functions

| FUNCTION | FUNCTION NUMBER | INSIDE OUTSIDE | DESCRIPTION | ANSI NUMBER |
|--------------|-----------------|------------------|--|-------------|
| Single Sided | KV125IND | | <ul style="list-style-type: none"> • No key outside • Indicator outside • Thumbturn inside extends/retracts deadbolt • Emergency key outside retracts deadbolt | E2192 |

How To Order

| SERIES | FUNCTION | FINISH | BACKSET |
|--------|----------|--------------------|-------------------------|
| KV | 125IND | 626 | ADJ - 2-3/4" AND 2-3/8" |
| | | 613E 626 630 | |

ORDERING EXAMPLE: KV 125IND 626 ADJ



SECURING CONFIDENCE OPENING POSSIBILITIES

Phone: 717.656.4281

Tech Support: 800.441.9692

Email: help@pdqlocks.com

Headquarters: 2230 Embassy Drive, Lancaster, PA
17603 P.O Box 6426, Lancaster, PA 17607

Regional Distribution Centers: Lancaster, PA | Norcross,
GA | Auburn, WA

Middle East Manufacturing: Dammam, Kingdom of
Saudi Arabia