

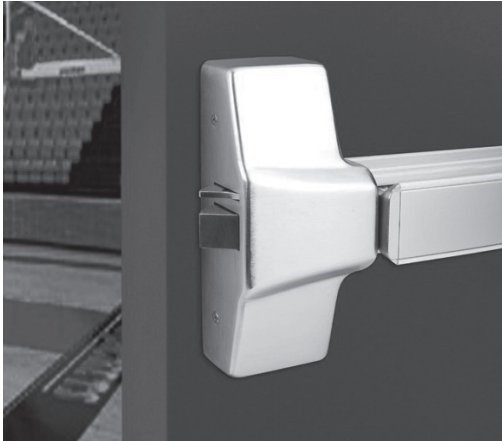
6 EW SERIES

HEAVY DUTY EXIT DEVICE TRIM



**ASSEMBLED
IN THE USA**

ARCHITECTURAL SUBMITTAL SHEET

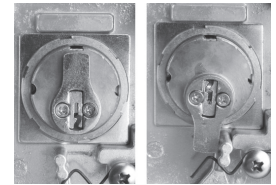


- Designed for high use and abuse Grade 1 applications.
- Heavy duty cast alloy escutcheon thru-bolts directly into the exit device chassis.
- No exposed set-screws or installation fasteners.

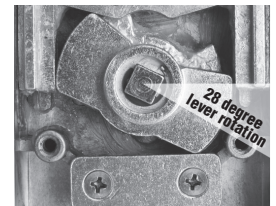
FEATURES



- Designed for use with PDQ's 6200 series. RIM, Concealed Vertical Rod and Surface Vertical Rod exit devices.
- PVD (Physical Vapor Deposition) finish offered standard in 605 - Bright Brass, 606 - Satin Brass and 613 - Oil Rubbed Bronze. PVD coated finishes offer outstanding resistance to wear, durability and corrosion.
- Lever remains rigid when locked.
- Simple installation.
- Handing is field reversible.
- Lever rotation: 28 degrees.
- Designed and assembled by PDQ in Leola, PA USA.



Direct Cam Drive to Control Locking and Unlocking



Heavy duty cast alloy internal locking components

CERTIFICATIONS, COMPLIANCES, LISTINGS

• ANSI/UL10C and CAN/ULC-5104 Listed for "Fire Exit Hardware" up to 3 hours for 4'0" x 8'0" maximum single, 8'0" x 8'0" maximum pairs.

• Certified to ANSI/BHMA A156.3-2008.

• Lever designs comply with ADA (Americans with Disabilities Act) and ICC/ANSI 117.1 for accessible and Usable Buildings.

• Assembled in the U.S.A. with U.S. and foreign material. Meets requirements of the Buy American Act.

CONVERSION KITS AVAILABLE FOR CHANGING FUNCTIONS IN THE FIELD.

• For changing from 08 Classroom to 09 Storeroom, order 629089.

• For changing from 09 Storeroom to 08 Classroom, order 629098.

