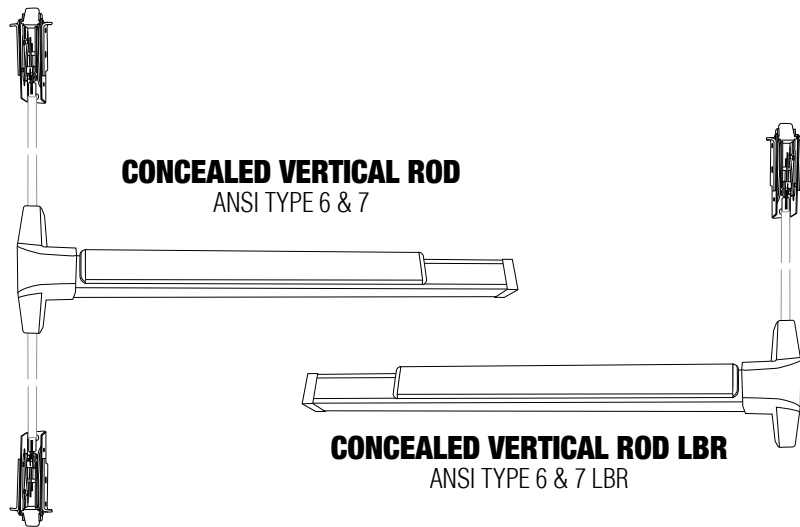


6202CV SERIES

ARCHITECTURAL NARROW STILE CONCEALED VERTICAL ROD EXIT DEVICE

ARCHITECTURAL SUBMITTAL SHEET



SPECIFICATIONS



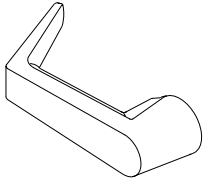
CHASSIS:	<ul style="list-style-type: none"> Corrosion resistant plated steel
RAIL:	<ul style="list-style-type: none"> Extruded aluminum Specify 630F for full stainless tactile surfaces (roll formed)
LATCHES:	<ul style="list-style-type: none"> Top Latch — Pullman with dead latching 5/8" throw Bottom Latch — Pullman with 5/8" throw, held retracted during door swing
HAND:	<ul style="list-style-type: none"> Device is non-handed Trim is non-handed or field reversible
DOGGING:	<ul style="list-style-type: none"> Hex key dogging standard Cylinder dogging optional Dogging not available on fire listed devices
MINIMUM STILE WIDTH:	<ul style="list-style-type: none"> 2-5/8"
DOOR THICKNESS:	<ul style="list-style-type: none"> 1-3/4" standard, others vary by trim selection
DOOR WIDTH:	<ul style="list-style-type: none"> Standard for 3 ft doors, option available for doors up to 4 ft width
FINISHES:	<ul style="list-style-type: none"> 613 - Oil Rubbed Bronze, 630 - Satin Stainless Steel, 630F - Full Satin Stainless Tactile Surfaces Optional Anti Microbial Coating available on 626 and 630 finishes only
FASTENERS:	<ul style="list-style-type: none"> Includes sex nuts, machine screws and wood screws
VERTICAL RODS:	<ul style="list-style-type: none"> Stock for 7' doors standard. Extension rods available for doors up to 10'.
ELECTRONIC ACCESS CONTROL OPTIONS:	<ul style="list-style-type: none"> Motorized Latch Retraction Request to Exit/Signal Switches SS/SS2 Alarmed Exit MLR Retrofit Kit - 81550K-MDT
WARRANTY:	<ul style="list-style-type: none"> Ten (10) year limited warranty
CERTIFICATIONS, LISTINGS COMPLIANCES:	<ul style="list-style-type: none"> UL 305 listed for "Panic", UL10C Listed for "Fire Exit Hardware" labeled for up to 3 hours Certified to ANSI/BHMA 156.3, Grade 1 Complies with ADA (Americans with Disabilities Act) and ICC/ANSI 117.1 for Accessible and Usable Buildings Meets the requirements of the Buy American Act.

6202 SERIES

ARCHITECTURAL NARROW STILE EXIT DEVICE TRIM

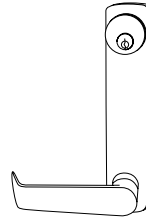
ARCHITECTURAL SUBMITTAL SHEET

LEVER STYLES

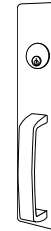


PHILADELPHIA 

TRIM TYPES



EN - ESCUTCHEON



GN - GRIP PULL

TRIM FUNCTIONS

FUNCTION*	DESCRIPTION
01	Exit only, no trim.
02	Entrance by trim when actuating bar is locked down (dummy trim).
03	Entrance by trim when latch is released by key. Key removable only when locked (night latch).
04	Entrance by trim when latch is retracted by key or set in retracted position by key (night latch with cylinder dogging). Requires 6212 device with cylinder dogging.
08	Entrance by knob or lever. Key locks or unlocks knob or lever (classroom lever).
14	Entrance by trim when latch bolt is released by lever. Always active, no cylinder (passage lever).

*All functions not available in every trim style

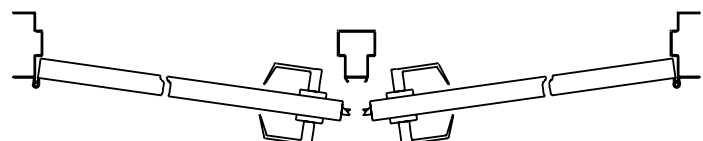
FINISHES

CODE*	DESCRIPTION
613 (US10B)	Oil Rubbed Bronze, No Coating
626 (US26D)	Satin Chromium Plated, No Coating
630 (US32D)	Satin Stainless Steel, No Coating (Grip Pull Trim Only)

*All finishes not available in every trim style

HANDING

Out Swing Door



LEFT HAND
REVERSE (LHR)

RIGHT HAND
REVERSE (RHR)

OUTSIDE

6202 SERIES

ARCHITECTURAL NARROW STILE EXIT DEVICE TRIM

ARCHITECTURAL SUBMITTAL SHEET

HOW TO ORDER

QUANTITY	SERIES	TYPE	FUNCTION	LEVER	HANDING	FINISH	CYLINDER OR HOUSING*	KEYWAY*	KEYING*	OPTIONS
10	6	EN	08	PHL	—	626	D	SCC	KD	—
Notes: 1 - List price includes standard default cylinder		GN — Grip Pull, Narrow EN — Escutcheon, Narrow Stile	02 — Dummy Trim 03 — Night Latch 04 — Night Latch w/Exit Device Cylinder Dogging 08 — Classroom w/Lever 14 — Passage w/Lever	PHL — Philadelphia	RHR LHR	613 — Oil Rubbed Bronze 626 — Satin Chrome 630 — Satin Stainless Steel	D — Default L — Less Cylinder SF6 — SFIC w/Core, 6 Pin SF7 — SFIC w/Core, 7 Pin LF — Schlage® Compatible LFIC w/Core SFL — SFIC Housing less core LFL — Schlage® Compatible LFIC Housing less core	*Standard High Security Cylinders, Cores and Keying Information — See Cylinders, Keying and Cores Architectural Submittal Sheets		AM — Antimicrobial Coating

TRIM CYLINDER REFERENCE GUIDE

FUNCTION	DESCRIPTION	EN ESCUTCHEON FOR NARROW STILE	GN GRIP PULL, NARROW STILE
03	Night Latch	RIM	RIM
04	Night Latch w/Exit Device Cylinder Dogging	RIM	RIM
08	Classroom w/Lever	Mortise	—

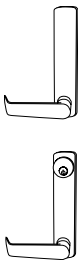



6202 SERIES

ARCHITECTURAL NARROW STILE EXIT DEVICE TRIM

ARCHITECTURAL SUBMITTAL SHEET

NARROW STILE TRIM

GEN	APPLICATION	FUNCTION	DESCRIPTION	LEVER	630	613
NARROW ESCUTCHEON 	RIM SURFACE VERTICAL ROD CONCEALED VERTICAL ROD	02	Dummy Trim (Rigid Lever)	PHL	•	•
		03	Night Latch w/Lever		•	•
		08	Classroom w/ Lever		•	•
		14	Passage w Lever		•	•

6GN	APPLICATION	FUNCTION	DESCRIPTION	LEVER	630	613
GRIP PULL  Compatible with Rim (R) and Surface Vertical Rod (SVR) devices only.	RIM SURFACE VERTICAL ROD	02	Dummy Trim		•	
		03	Night Latch		•	

OPTIONS

CODE	DESCRIPTION
AM	Antimicrobial coating applied to tactile surfaces