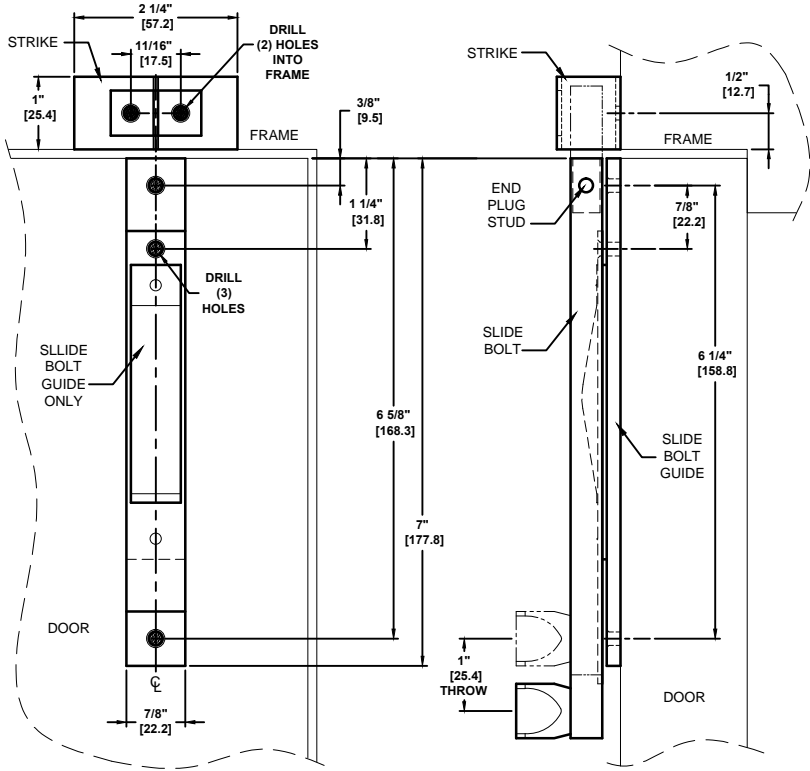


462 CONCEALED MOUNT SLIDE BOLT FOR STEEL OR WOOD DOORS

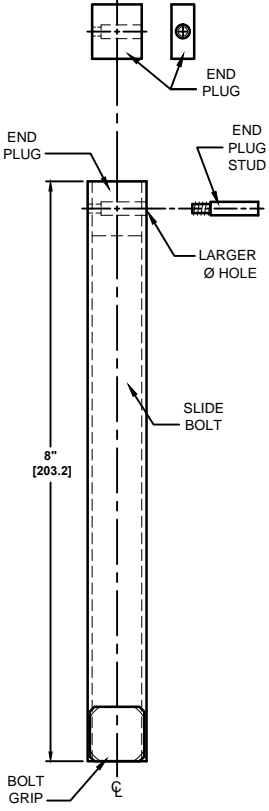
TEMPLATE: 939315
REV. 0 12-31-14

NOT TO SCALE

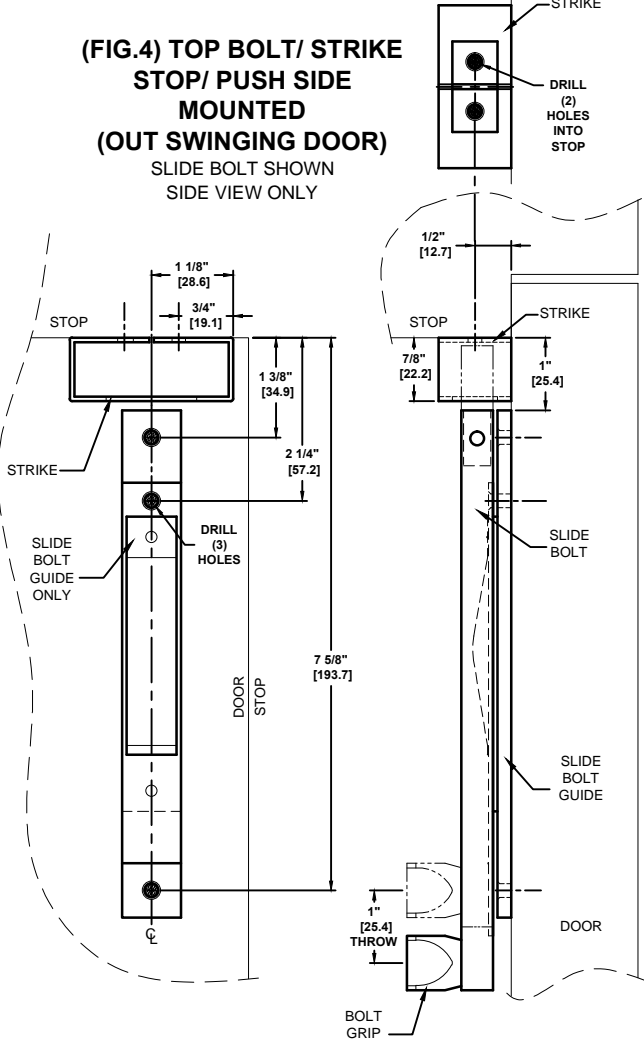
(FIG.1) TOP BOLT/ STRIKE
HINGE/ PULL SIDE MOUNTED
(IN SWINGING DOOR)
SLIDE BOLT SHOWN SIDE VIEW ONLY



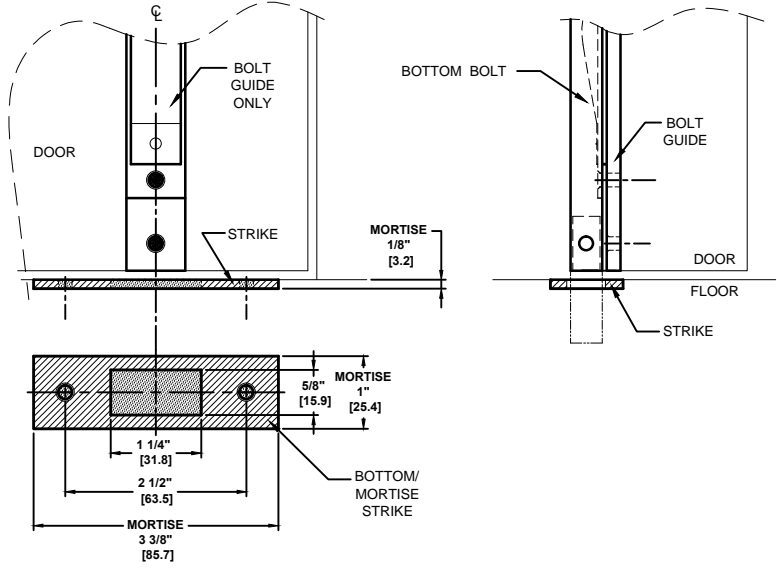
(FIG.3) SLIDE BOLT,
END PLUG, &
END PLUG STUD



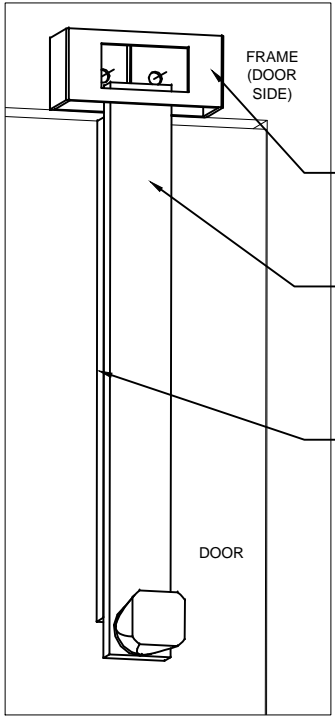
(FIG.4) TOP BOLT/ STRIKE
STOP/ PUSH SIDE MOUNTED
(OUT SWINGING DOOR)
SLIDE BOLT SHOWN
SIDE VIEW ONLY



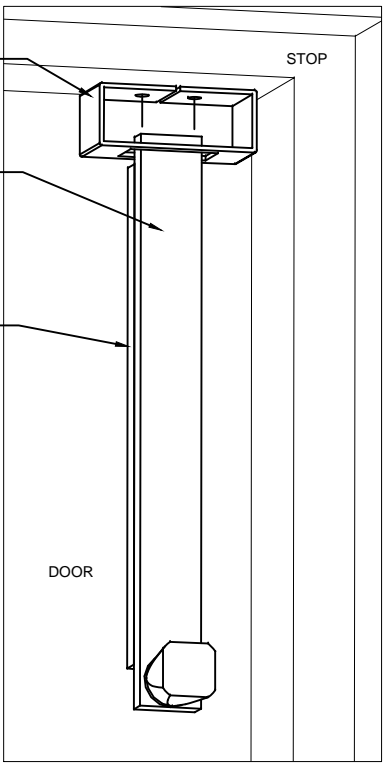
(FIG.2) BOTTOM BOLT/ MORTISE STRIKE



(FIG.5) TOP BOLT/ STRIKE
HINGE/ PULL SIDE MOUNTED
(IN SWINGING DOOR)



(FIG.6) TOP BOLT/ STRIKE
STOP/ PUSH SIDE MOUNTED
(OUT SWINGING DOOR)



INSTRUCTIONS:

1. DETERMINE SIDE OF DOOR TO WHICH BOLTS ARE TO BE APPLIED.
2. REMOVE SLIDE BOLT FROM SLIDE BOLT GUIDE ASSEMBLY.
3. DRILL MOUNTING HOLES IN DOOR FOR THE SLIDE BOLT GUIDES. SEE (FIG.1) & (FIG.4) FOR TOP BOLT. SEE (FIG.2) FOR BOTTOM BOLT.
4. ATTACH SLIDE BOLT GUIDE TO DOOR AND REPLACE SLIDE BOLT ONTO THE BOLT GUIDE..
5. INSTALL THE END PLUG AT FRAME/ STOP END OF SLIDE BOLT. SEE (FIG.3). ALIGN THE LARGER DIAMETER HOLE IN THE END PLUG WITH THE LARGER DIAMETER HOLE IN THE SLIDE BOLT. USE A SMALL TIP PHILLIPS HEAD SCREW DRIVER TO INSTALL & TIGHTEN THE END PLUG STUD .
6. SELECT APPROPRIATE TOP OR BOTTOM STRIKE. ALIGN EACH STRIKE WITH SLIDE BOLT AND ATTACH WITH REMAINING SCREWS.

NOTES:

1. DIMENSIONS IN **INCHES [MM]** .
2. HOLLOW METAL DOOR AND FRAME SHOULD BE PROPERLY REINFORCED WITH A 3/16" [4.8] MINIMUM THICKNESS PLATE.
3. ALWAYS CHECK PDQ WEBSITE FOR THE MOST RECENT TEMPLATE REVISION AT WWW.PDQLOCKS.COM

NOTE:
DRILL BOLT GUIDE MOUNTING HOLES FOR 12-24 X 1" FHPHMS, (3) SCREWS INCLUDED
#12 X 1-1/4" FHPHMS, (3) SCREWS INCLUDED

DRILL STRIKE MOUNTING HOLES FOR 12-24 X 1" FPPHMS , (2) SCREWS INCLUDED
#12 X 1-1/4" FHPHMS, (2) SCREWS INCLUDED



PDQ Manufacturing
2754 Creek Hill Rd.
Leola, PA 17540
800-441-9692
Fax: 717-656-6892
www.pdqlocks.com