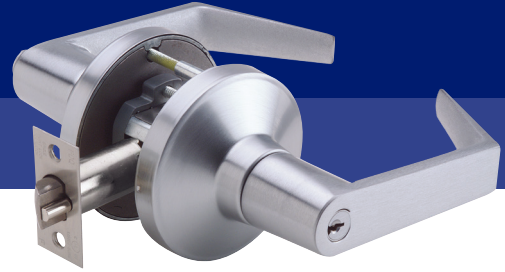


GRADE 2



Grade 1 Strength at a Grade 2 Price

- Super Strong — Rigid locked lever — No free wheeling lever or clutch
- Versatile — Trim matches XGT/GT Grade 1 locks

Product Specifications



FOR DOORS:	• 1-3/8" to 1-3/4" • Preset for 1-3/4" door
APPLICATION:	• Secure installation using a through bolting process • Fits standard 160 and 161 Door prep with the addition of through bolt holes
BACKSET:	• 2-3/4" standard • 2-3/8", 5" optional
CHASSIS:	• Heavy duty diecast, investment cast, cold rolled steel and stainless steel mechanism
FRONT:	• 2-1/4" x 1-1/8" or 2-1/4" x 1" • Stainless Steel or Wrought Brass • Beveled 1/8" in 2"
STRIKE:	• ASA standard • T-Strike or Full Lip Strike optional • Stainless Steel or Wrought Brass
ROSE:	• 3-3/8" DIA Wrought
LATCHBOLT:	• 1/2" Throw
HAND:	• Non-handed
TRIM:	• Solid diecast PHL, BSN or MIA Levers • 65° Lever Rotation • Wrought Brass Roses • Concealed Screws
KEYING:	• Keyed to your needs. Keys, keyway, SFIC core, cylinder and keying information on pages 36-37.
FINISHES:	• 605 (US3), 606 (US4), 612 (US10), 613 (US10B), 622 Flat Black, 625 (US26), 626 (US26D) • Optional Antimicrobial Coating
CASE QUANTITY:	• 6 locksets
COUNTRY OF ORIGIN:	• Assembled in the U.S.A. with U.S. and foreign material. Meets requirements of the Buy American Act.
WARRANTY:	• Eight (8) Year Limited Warranty

Listings and Certifications

- CERTIFICATIONS, LISTINGS, COMPLIANCES:**
- UL/CUL 10C listed for 3 hrs, for single doors up to 4'0" x 8'0"
 - Certified to ANSI/BHMA 156.2, Grade 2
 - Complies with ADA (Americans with Disabilities Act) and ICC/ANSI 117.1 for Accessible and Usable Buildings

Levers/Trim



Philadelphia

Boston

Miami

Finishes



605 (US3)
Bright Brass

606 (US4)
Satin Brass

612 (US10)
Satin Bronze

613 (US10B)
Oil Rubbed Bronze

622 (US19)
Flat Black

625 (US26)
Bright Chromium

626 (US26D)
Satin Chromium