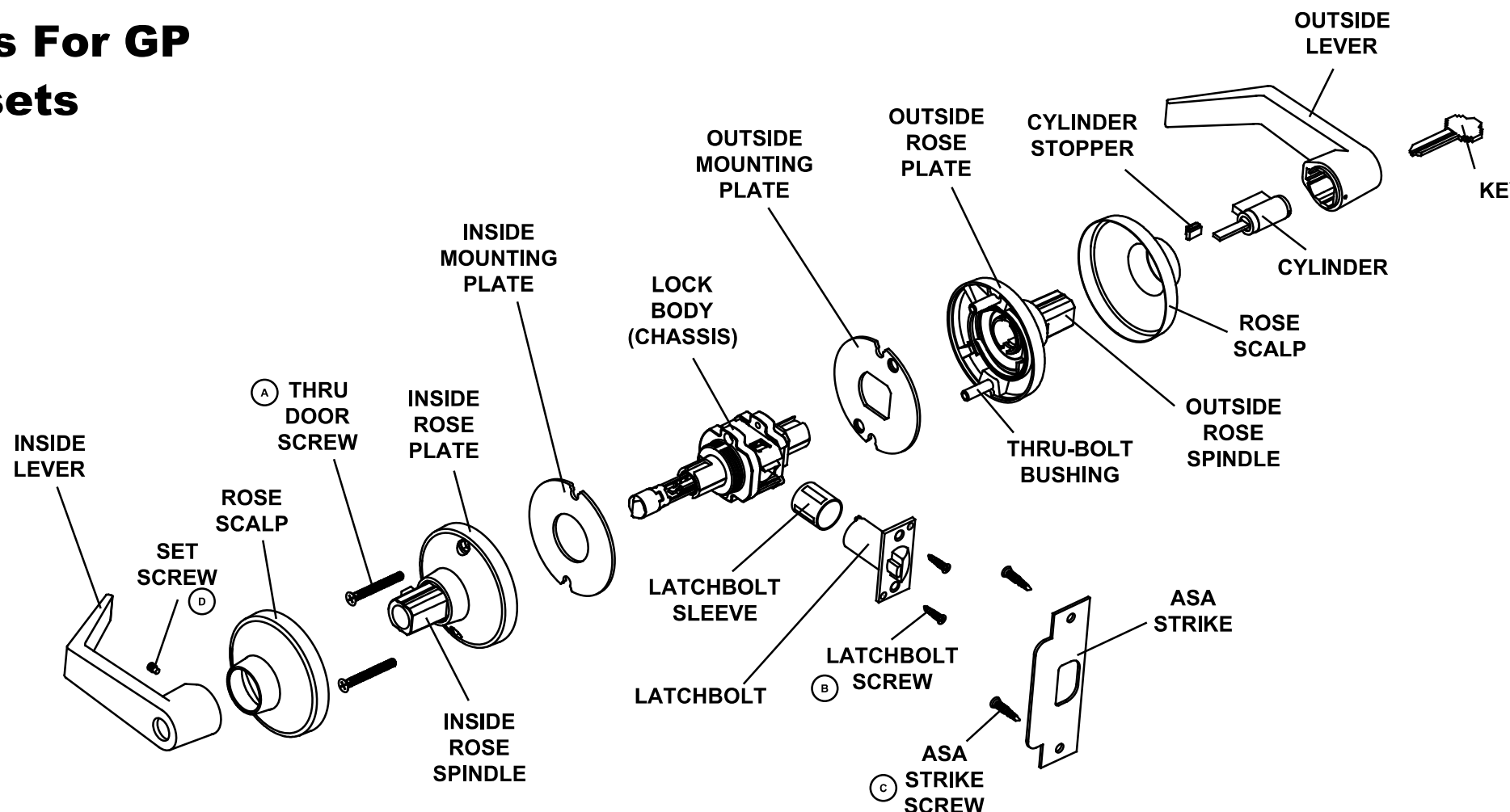
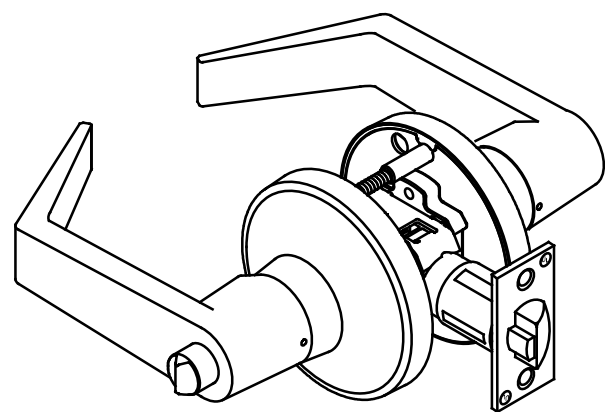


Installation Instructions For GP Cylindrical Lever Locksets GRADE 2



2754 Creek Hill Rd.
Leola, PA 17540
800-441-9692
Fax: 717-656-6892
www.pdqlocks.com



HARDWARE SCHEDULE

- A. 2 - M5 x 0.8, L=45mm
- B. 2 - #8-32 COMBO
- C. 2 - #12-24 COMBO
- D. 1 - M5 x 0.8 FULL DOG, L=8mm

VP10132
REV 2

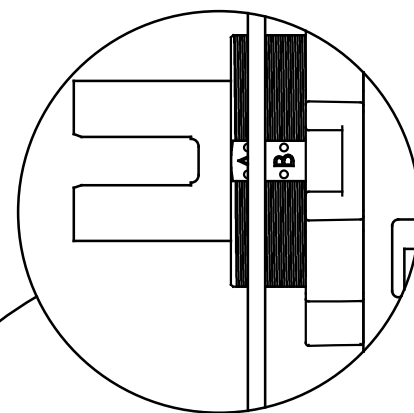
VERIFY ADJUSTMENT FOR DOOR THICKNESS

NOTE: Lock is factory preset for 1 3/4" door unless special ordered for 1-3/8".

- A○ - 1-3/4" Thick Door - Factory Preset
- B○ - 1-3/8" Thick Door

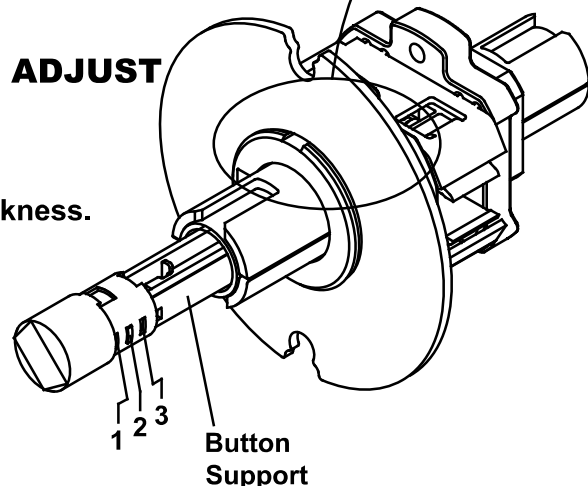
Adjust inside mounting plate as follows:

- A. Remove inside rose assembly.
- B. Thread mounting plate until top of plate aligns with center of dots next to imprinted ○A○ or ○B○ on side of hub.



FOR FUNCTIONS WITH BUTTONS, ADJUST BUTTON AS FOLLOWS:

- A. Squeeze button support.
- B. Adjust button for the correct door thickness.
 - (1) First position is for 1-3/8" doors.
 - (2) Second position is for 1-3/4" doors.
 - (3) Third position is not used.



STANDARD CYLINDER

TO REMOVE CYLINDER LEVER

- A. Insert key into lock and rotate 45° clockwise and hold.
- B. Depress retainer clip with pick provided (or other pointed tool).
- C. Pull lever from lock.

TO REMOVE CYLINDER FROM LEVER

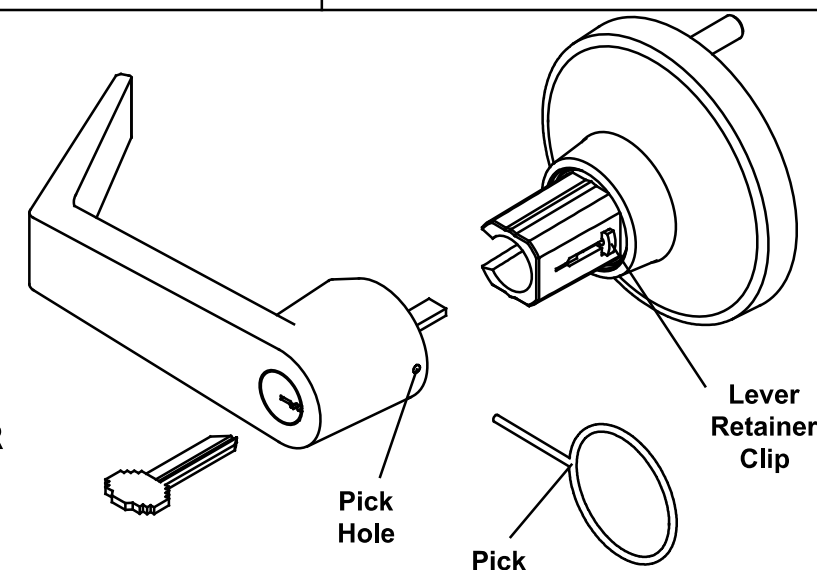
- A. Remove cylinder stopper.
- B. Slide cylinder out of lever.

TO INSTALL CYLINDER INTO LEVER

- A. Slide cylinder into lever.
- B. Install cylinder stopper.

TO INSTALL CYLINDER LEVER

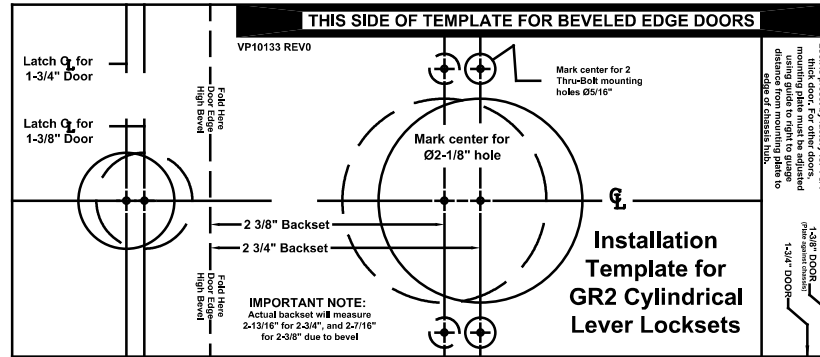
- A. Slide lever down to lever retainer clip on spindle.
- B. Insert key into cylinder and rotate 45° clockwise and hold.
- C. Push in lever retainer clip and slide lever into locked position.



IC CYLINDER

TO REPLACE CYLINDER

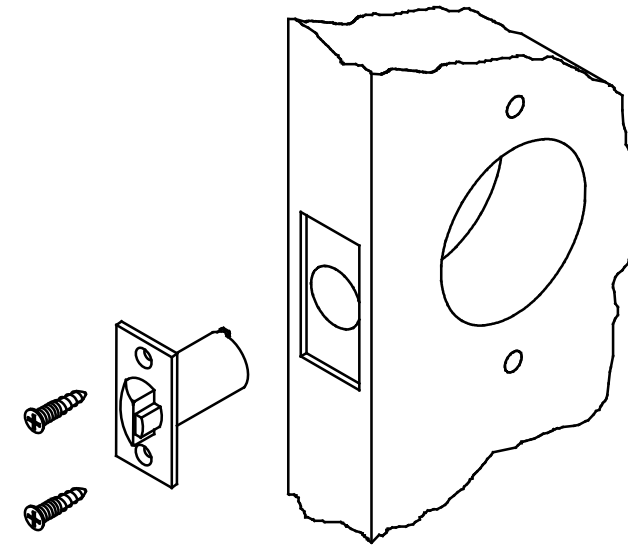
- A. Insert control key, turn clockwise and pull to remove cylinder.
- B. Remove tailpiece and spacer spring (only used on 6 pin cylinders) from back of old cylinder and install on new cylinder.
- C. Insert control key into new cylinder, turn clockwise and insert cylinder into lever.
- D. Rotate key counter-clockwise to lock cylinder into place and remove key.



1. MARK DOOR

- A. Mark height line on edge of door. Suggested height from floor is 38" to 40 5/16".
- B. Fold template over edge of door, centering on the height line.
- C. Mark center point for 2 1/8" hole at desired backset.
- D. Mark door for two 5/16" thru-bolt mounting holes.

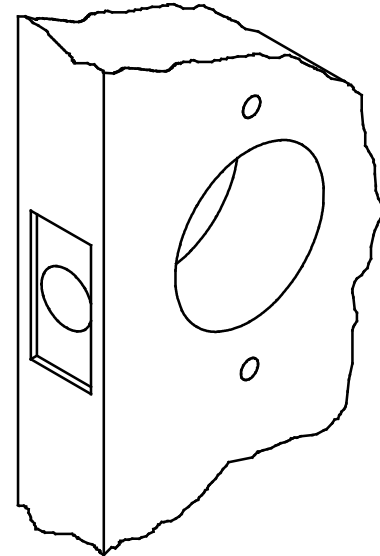
NOTE: Accurate door preparation is essential for proper function of this lock.



3. INSTALL LATCHBOLT

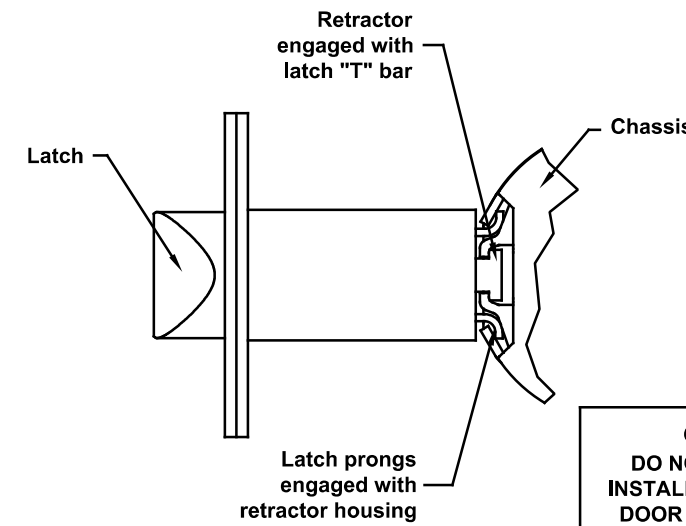
- A: Make sure latchbolt is facing the correct side of the door.
- B: Use the two #8-32 combo screws provided to secure latch.

2. BORE HOLES (DOOR PREPARATION)



- A. Bore a 2 1/8" hole through door.
- B. Bore two 5/16" holes (thru bolt holes) through door.
- C. Bore a 1" hole to intersect the center line of the 2 1/8" hole. Cut out for the 1 1/8" x 2 1/4" latch front. Use the latch front faceplate as a template. Latch front should sit flush with the edge of the door.

NOTE: A drill fixture (similar to PDQ part #V11225) is recommended for drilling the thru bolt holes.



CAUTION!
DO NOT ATTEMPT TO
INSTALL LOCK UNIT WITH
DOOR CLOSED, GUARD
BOLT TAILPIECE WILL
INTERFERE.

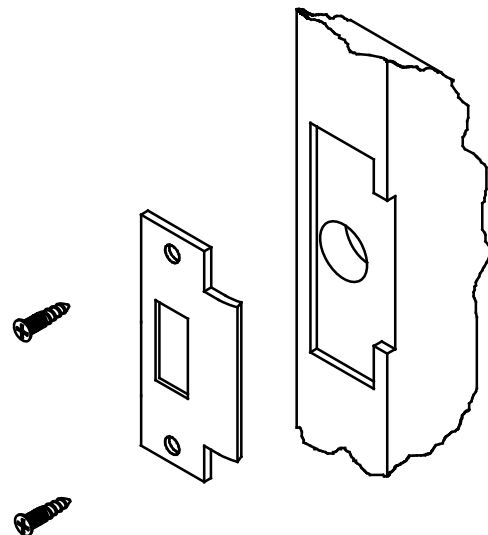
5. INSTALL LOCK ASSEMBLY

- A. Remove outside trim assembly.
- B. From the inside of the door, insert lock chassis / inside trim assembly making sure that the lock body engages with the latch prongs and the retractor interlocks with latch "T" bar (pictured).

NOTE: Lock is preset by factory for 1 3/4" doors. For installation on a door other than 1 3/4", see "VERIFY ADJUSTMENT FOR DOOR THICKNESS" on reverse.

4. INSTALL STRIKE

- A. Mark a vertical center line on the door jamb.
- B. Mark an intersecting height line opposite the center of the door latch hole.
- C. Bore a 1" hole on vertical line in jamb, 1" deep, to allow the latchbolt to extend to its full length.
- D. Cut out for strike using the strike as a template.
- E. Install the strike using the two combo screws provided in the strike pack.



NOTE: "ASA" strike installation shown. For "T" strike or "full lip" strike follow the same procedure. A dust box may be installed between the strike and the jamb.

6. INSTALL OUTSIDE TRIM ASSEMBLY

- A. Install outside trim assembly. Trim is keyed and will only fit onto chassis one direction.
- B. Install two thru door screws (M5 x 0.8 x 45mm) from inside of door into the threaded bushings of the outside trim.
- C. Install the inside rose scalp, making sure that the tabs on the rose scalp snap firmly into the cutouts on the rose plate.
- D. Install inside lever and tighten the set screw. For cylinder lever installation see reverse.

