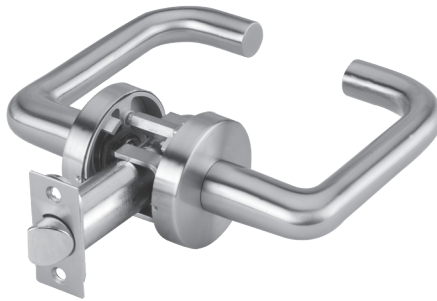


## ARCHITECTURAL SUBMITTAL SHEET

### FEATURES

- Contemporary decorative trim perfect for high end residential and office work
- Designed to compliment MR Series Mortise locks sharing the same sectional rose diameter and levers
- Investment cast stainless steel trim
- Range of lever styles available
- Available in round rose or square rose
- Uses a slender 1-3/8" diameter rose providing a clean contemporary look



**SHOWN WITH DALLAS LEVER**



**SQUARE ROSE SHOWN WITH ORLANDO LEVER**



ADA COMPLIANT

### SPECIFICATIONS

<b>FOR DOORS:</b>	• For doors 1-3/8" (35mm) to 1-3/4" (44mm) thick standard
<b>BACKSET:</b>	• 2-3/4" (70mm) default. Optional: 2-3/8" (60mm);
<b>STRIKE:</b>	• "Full Lip" strike default. "T" strike and ANSI/ASA strike optional
<b>LEVERS:</b>	• Philadelphia, Boston, Miami, Chicago, Dallas, Los Angeles, Memphis, Orlando, Ball Knob
<b>ROSE DIMENSIONS:</b>	• Round Rose: 2-3/8" DIA • Square Rose: 2-9/16"
<b>DOOR PREP:</b>	• ANSI Standard 115.2, Type 161 for 2-3/4" Backset • Type 160 optional
<b>LATCH BOLTS:</b>	• 2-3/4" backset has 1-1/8" faceplate. 2-3/8" backset has a 1" faceplate filler
<b>HAND:</b>	• Non-handed, except Memphis and Orlando
<b>FINISHES:</b>	• 605 (US3) Bright Brass, 606 (US4) Satin Brass, 612 (US10) Satin Bronze, 613 (US10B) Oil Rubbed Bronze, 629 (US32) Bright Stainless Steel, 630 (US32D) Satin Stainless Steel • Antimicrobial coating available on 630 only
<b>TRIM:</b>	• Stainless Steel Levers and Roses
<b>LEVER DESIGNS:</b>	• Philadelphia, Boston, Miami, Chicago, Memphis, Orlando, Dallas and Ball Knob.
<b>CERTIFICATIONS, LISTINGS, COMPLIANCES:</b>	• Complies with ADA (Americans with Disabilities Act) and ICC/ANSI 117.1 for Accessible and Usable Buildings
<b>WARRANTY:</b>	• Five (5) year limited warranty (except ball knob)